

Electromagnetic sieve shaker

EN 932-5

GENERAL DESCRIPTION

The vertical sieving motion is provided by a very effective electromagnetic unit, which is set to obtain the best result with sand and aggregates. Complete with timer. The shaker can be completed with the Noise reduction cabinet recommended for use in the CE countries and with the Wet sieving attachment for washing fine materials through the sieves without any loss of sample. See accessories.

TECHNICAL SPECIFICATIONS

- Sieve capacity: up to twelve 200 mm (8") and up to eight 300-315 mm (12") sieves plus pan and cover.
- Power approx.: 400 W
- Dimensions: 496x406x946 mm
- Weight approx.: 30 kg

ORDERING INFO

15-D0407/B

Electromagnetic sieve shaker for sieves up to 315 mm dia. 230 V, 50-60 Hz, 1 ph

15-D0407/BZ

Electromagnetic sieve shaker for sieves up to 315 mm dia. 110 V, 60 Hz, 1 ph

ACCESSORIES

Cabinet

15-D0400/CAB

Noise reduction cabinet suitable for sieve shaker models 15-D0411 and 15-D0407/B.

Ideal for use in laboratory and essential to fulfill CE prescription. The cabinet is manufactured from sheet steel and lined internally with soundproofing material.

- Overall dimensions: 770x722x1415 mm
- Weight approx.: 60 kg

Wet sieving attachments

Cover combining the locking plate and spray nozzle. Stainless steel pan with spout drainage plate. Location plate. Four models available:

15-D0400/B1

Wet sieving attachment for 200 mm dia. sieves. Weight 2.5 kg

15-D0400/B2

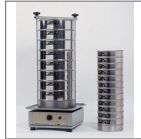
Wet sieving attachment for 203 mm (8") dia. sieves. Weight 2.5 kg approx.

15-D0400/B3

Wet sieving attachment for 300 mm dia. sieves. Weight 5 kg approx.

15-D0400/B4

Wet sieving attachment for 305 mm (12") dia. sieves. Weight 5 kg approx.



Electromagnetic sieve shaker 15-D0407/B with sieves



Wet washing sieve attachment model 15-D0400A1