

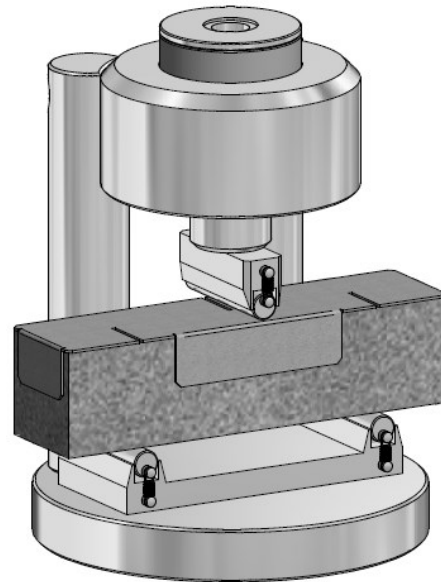
Determination of Cement Strength

65

Cement Compression and Flexural Testing



65-L0019/B



65-L0019/B1 fitted on cement prism 40x40x160mm

Flexural test devices for mortar beams

ASTM C348 | EN 196-1

GENERAL DESCRIPTION

- Robust frame fitted with an upper bearer that moves vertically supported by springs. One of the two lower bearers can tilt horizontally and the distance between the two bearers is 100 mm for the EN version 65-L0019/B and 119 mm for the ASTM version 65-L0019/C. Apart from that, the two models are identical.
Total height is 188 mm
- Weight approx.: 8 kg

ORDERING INFO

65-L0019/B

Flexure testing device for mortar prisms 40x40x160 mm, conforming to EN 196-1

65-L0019/B1

Marking template for centering the 40x40x160 mm prism on 65-L0019/B device

65-L0019/C

Flexure testing device for mortar prisms 40x40x160 mm, conforming to ASTM C348

ACCESSORIES

Distances pieces to adjust for vertical daylight



53 Granite Street, GEEBUNG, QLD, 4034, Australia | P.O. Box 124, VIRGINIA, QLD 4014, Australia

Ph.: +61 (0)7 3265 4952 | Fax: +61 (0)7 3265 2713 | Email: sales@geo-con.com.au | Web: www.geo-con.com.au