

DATA SHEET

Flexural test devices for mortar beams



ASTM C348 | EN 196-1

GENERAL DESCRIPTION

Robust frame fitted with an upper bearer that moves vertically supported by springs. One of the two lower bearers can tilt horizontally and the distance between the two bearers is 100 mm for the EN version 65-L0019/B and 119 mm for the ASTM version 65-L0019/C. Apart from that, the two models are identical.

- Total height is 188 mm
- Weight approx.: 8 kg

ORDERING INFO

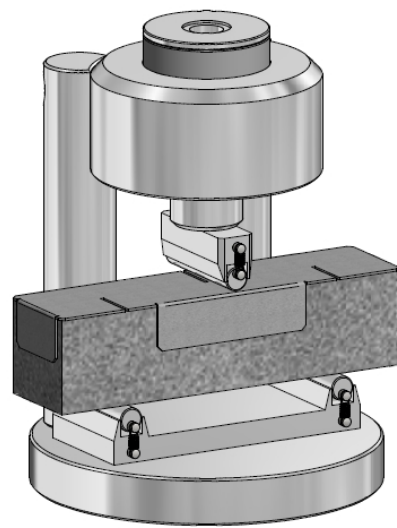
- 65-L0019/B** Flexure testing device for mortar prisms 40x40x160 mm, conforming to EN 196-1
- 65-L0019/B1** Marking template for centering the 40x40x160 mm prism on 65-L0019/B device
- 65-L0019/C** Flexure testing device for mortar prisms 40x40x160 mm, conforming to ASTM C348

ACCESSORIES

Distance pieces to adjust the vertical daylight



65-L0019/B Mortar Flexural Test Frame



65-L0019/B1 fitted on 40x40x 160 prism