

# GEODATALOG 8

## Data acquisition unit

### GEODATALOG 8

- Up to 8 independent input channels.
- Network configuration of up to 64 independent channels.
- LAN / Ethernet connection to PC via dedicated software (included).
- Compatible with load cells, pressure transducers, strain gauges, LDT/LVDT/potentiometric displacement transducers.
- Possibility to synchronize pressure and volume data coming from HYDROMATIC with data from the other transducers connected
- Effective resolution: 131,000 points.
- Sampling rate up to 500 readings per second per channel.
  - Numerical and graphical display of readings via PC software.
  - The transducers can be grouped and combined by the user for matching different applications.
  - It is possible to perform various tests (e.g. shear, consolidation, triaxial, ...) in parallel, each one having independent clock, channels and logging mode



GEODATALOG 8 is a multipurpose data logger which works directly connected to a PC. Data are automatically transferred to the PC in real time for live monitoring of the tests progress.

GEODATALOG 8 records and monitors in real time the measurements requested for soil mechanics testing, as: consolidation, shear, triaxial, permeability and many others.

It is compatible with strain gauge load cells, pressure transducers, linear LDT transducers, LVDT conditioned transducers, potentiometric displacement transducers.

GEODATALOG 8 is conceived with a modular and flexible concept: up to 8 instruments can form a network and then create a modular system with up to 64 independent channels.

The data acquisition unit is supplied complete with general purpose DATACOMM 2 PC software allowing remote calibration of the channels and fully comprehensive data management.

DATACOMM 2 software combines the active channels into customizable groups by the operator. Data acquisition for each group is an independent task which can be started/stopped automatically with specific acquisition and logging mode.

ASCII format data export is available for combination with our geotechnical Geo-Analysis-Templates suitable for post-processing and printout of test certificates according to the most important international Standards.



Sistema modulare nella configurazione triassiale GEODATALOG 8 ed HYDROMATIC collegate in rete.

### Ordering information

#### **30-WF6008**

GEODATALOG 8, 8 channels multipurpose data logger with dedicated software DATACOMM 2:

- 8 independent analogue input channels
- Up to 8 instruments can work in a network creating a modular system with up to 64 independent channels.
- programmable VEXC via software from 1 to 10 V for each couple of channels (up to 4).
- Compatible with load cells, pressure transducers, strain gauges, LDT / LVDT / potentiometric type displacement transducers and any type of conditioned transducer having output signal 0-10 VDC or 0-20 mA.
- Effective resolution: 131'000 divisions.
- Numerical and graphical display of readings.
- LAN / Ethernet connection to PC.
- Supplied with general purpose PC software allowing remote calibration of the channels, and fully comprehensive data management.
- Data exporting with ASCII format.
- PC and cables not included.
- 110-230V / 50-60Hz / 1 Ph

### Accessories

#### **Cables (mandatory)**

##### **82-P9008/ELT**

Kit of four cables for connect load cells, pressure transducers, strain gauges, LDT / LVDT / potentiometric type displacement transducers to DATALOG 8 and GEODATALOG 8

##### **82-P9008/ELT1**

One cable for connect load cells, pressure transducers, strain gauges, LDT / LVDT / potentiometric type displacement transducers to DATALOG 8 and GEODATALOG 8

##### **30-WF6042**

Transducer extension cable, 6 m

##### **30-WF6044**

Transducer extension cable, 12 m

#### **Lan Hub**

##### **26-WF4645**

LAN hub with 8 ports for Wykeham Ferrance devices

#### **Data processing: Geo Analysis Templates**

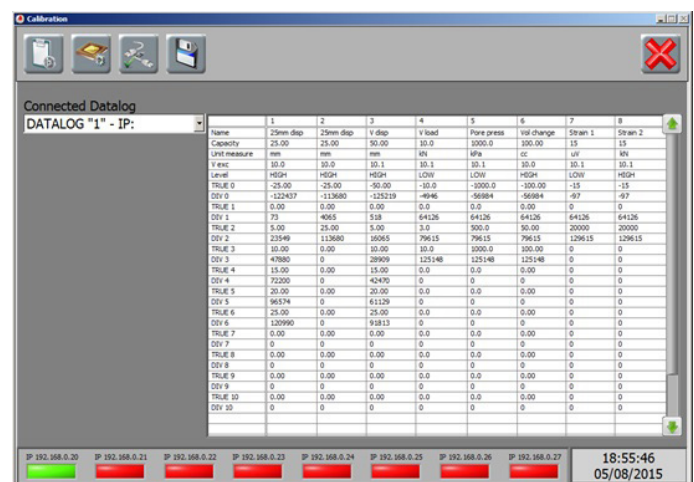
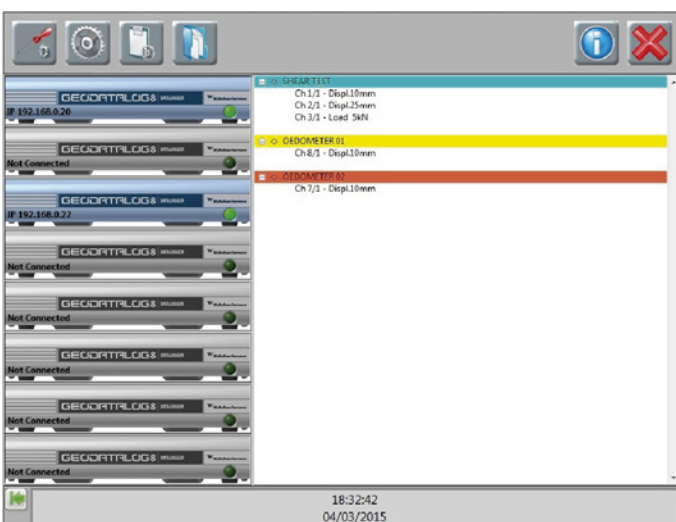
Templates for different tests and Standards have been developed specifically for processing test data recorded by the DATACOMM 2 software. The templates are MS Excel® based programs with easy-to-use functions for importing data files, calculating results, producing test reports that conforms to the relevant international Standards

### Technical specification

- Requires connected PC
- Number of channels: 8
- Network mode: Up to 8 units
- Sampling rate:  
Up to 500 readings/second per channels
- Real resolution: 131,000 points
- Communication port:  
LAN / Ethernet
- Excitation (VEXC):  
from 1 V to 10 V for each couple of channels (up to 4)
- Datalogger input:  
0-10 V; 0-20 mA
- Software: DATACOMM 2 (included)
- Dimensions approx lxdxh  
- [mm]: 290x195x61
- Weight approx [kg]: 1.6 kg
- Power supply:  
110-230V, 50-60 Hz, 1ph

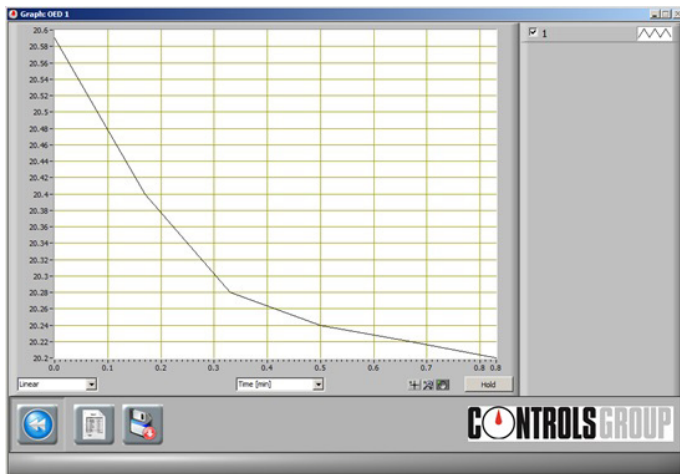


Test	Norme	Come Ordinare		
Consolidation	Incremental loading	BS 1377:5	30-WF6016/T1	
		ASTM D2435	30-WF6016/T8	
	Swelling	ASTM D4546	30-WF6016/T8A	
		CRS	ASTM D4186	30-WF6016/T6
	Hydraulic consolidation	BS 1377:6	30-WF6016/T12	
	SWCC -Hydraulic consolidation	-	30-WF6016/T13	
Shear	Direct/residual	BS 1377:7	30-WF6016/T2	
		ASTM D3080	30-WF6016/T9	
	Ring	BS 1377:7	30-WF6016/T3	
		ASTM D6467	30-WF6016/T16	
	Triaxial	Effective stress	BS 1377:8	30-WF6016/T4
			ASTM D4767 / D7181	30-WF6016/T11
Total stress		BS 1377:7	30-WF6016/T5	
		ASTM D2850	30-WF6016/T10	
Other tests	Permeability	BS 1377:6	30-WF6016/T14	
	CBR	BS 1377:4	30-WF6016/T7	
		ASTM D1883	30-WF6016/T17	
	Unconfined	ASTM D2166	30-WF6016/T15	

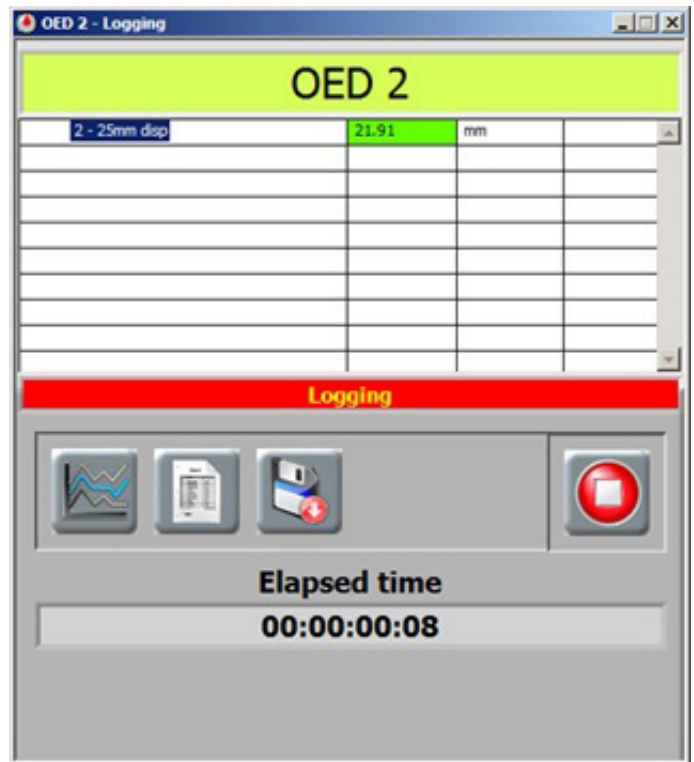


CHANNELS CONFIGURATION PANEL\_DATACOMM2: this panel displays all the connected units with their transducers. The transducers can be grouped and combined by the user for matching different applications

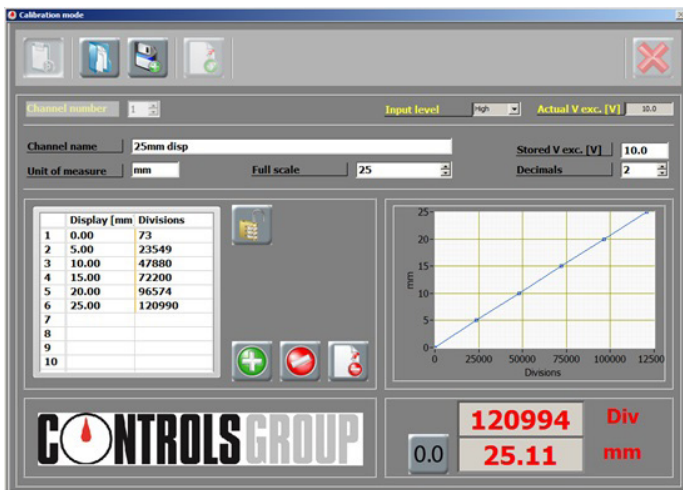
CHANNEL MANAGEMENT PANEL\_DATACOMM2: this panel is for managing transducer calibration data and is also where the IP address and channel hardware settings of the GEODATALOG 8 units connected to the PC can be edited



GRAPH PANEL\_DATACOMM2: this panel displays recorded data for the selected test plotted on a customizable



TEST CONTROL PANEL\_DATACOMM2: this panel is shown when a test is started and displays live readings for the selected group's channels, with buttons for showing the recorded data on a graph or in a table. Each group has its own panel, allowing multiple tests to be monitored simultaneously.



CALIBRATION PANEL\_DATACOMM2: this panel displays transducers details and tabulated and graphical calibration data, and contains functions for performing new calibrations, loading archived calibrations and uploading the data to the GEODATALOG 8

