

Wire mesh extractor

EN 12697-1

GENERAL DESCRIPTION

Used for the quantitative determination of bitumen in hot-mixed paving mixtures and pavement samples. The bitumen content is calculated by difference from the weight of extracted aggregates.

The filler, or ash, passing through the 63 µm basket has then to be separated from the bitumen/solvent solution using the appropriate centrifuge extractor. See [Filterless centrifuge binder extractors](#), model 75-B0024/N.

The unit has to be used with a suitable hot plate as our model 10-D1402 with Aluminium disk 75-B0015/6 for better heat distribution. See accessories.

It consists of a glass jar, of a wire basket suspended in the jar by a supporting ring, of a metal condenser and of a wire basket 63 µm opening. The solvent used can be profitably recovered with the [Solvent recovery unit](#).

- Max. basket capacity: 3 kg
- Overall dimensions: 335 mm high by 165 mm dia.
- Weight approx.: 2.8 kg

ORDERING INFO

75-B0015

Hot extraction apparatus test set, wire mesh filter method

ACCESSORIES

Accessories

10-D1402/D

Hot plate, 185 mm dia. with thermostat 230 V, 50-60 Hz, 1 ph

75-B0015/6

Aluminium disk 160 mm dia.

Spare parts

75-B0015/1

Metal condenser

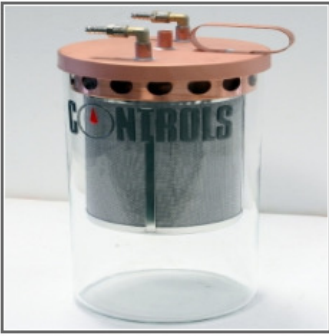
75-B0015/2

Spare glass jar

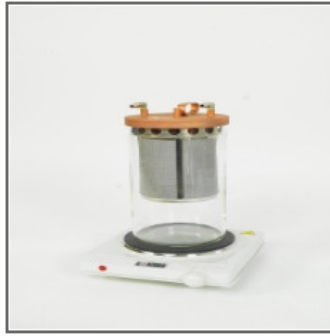
75-B0015/3

Wire basket 63 µm mesh openings

DATA SHEET



hot plate 10-D1402/D



75-B0015 with hot plate



Wire basket in the jar with supporting ring and metal condenser