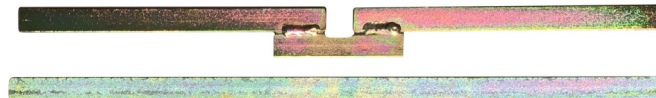


# Field and Laboratory Density/Bearing Capacity

35

## NUCLEAR GAUGE ACCESSORIES

Rod Extractor: Cat. No. 35-T3409/1.CON



Rod Extractor, 40cm Ergonomic Version:  
Cat. No. 35-T3409/1.CON



Scraper Plate: Cat. No. 35-T3410.CON



Drill Rod: Cat. No. 35-T3409.LOC



Drill Rod, Puller and Scraper Plate

